

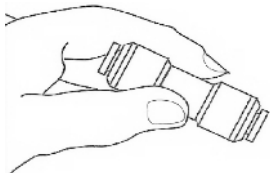
SECTION



PUSH IN COMPOSITE NORGREN FITTINGS

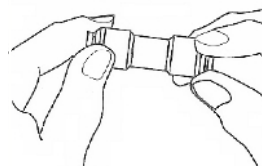


1



Select the part required for use from the range of Push Fit Connectors

2



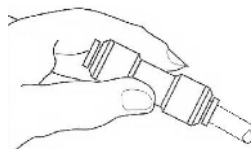
Visually inspect the part to ensure no obstruction is present

3



Prepare the tubing ready for insertion ensuring that the end is cut square

4



Insert tube, ensuring you have reached the stop position, now pull back

The Plastic & Metal range can be used for a variety of uses including: Air, Water, Vacuum and Fuel.

However under no circumstances can be used for carrying acids.



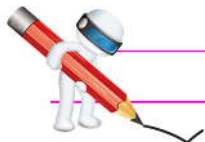
Not to be used on Braking Systems



TECHNICAL INFORMATION

Maximum Working Pressure 0 To 10 Bar

Temperature Range 0°C To +60°C



PUSH IN PLASTIC - COMPOSITE NORGREN FITTINGS

STRAIGHTS



Part Ref	Tube OD
PFM4NR	4 mm
PFM5NR	5 mm
PFM6NR	6 mm
PFM8NR	8 mm
PFM10NR	10 mm
PFM12NR	12 mm
PFM16NR	16 mm

ELBOWS



Part Ref	Tube OD
PFM54NR	4 mm
PFM56NR	6 mm
PFM58NR	8 mm
PFM510NR	10 mm
PFM512NR	12 mm
PFM516NR	16 mm

TEES



Part Ref	Tube OD
PFM74NR	4 mm
PFM75NR	5 mm
PFM76NR	6 mm
PFM78NR	8 mm
PFM710NR	10 mm
PFM712NR	12 mm
PFM716NR	16 mm

ASSORTED BOXES

Part Ref: **PFMASB** (Straights)



Part Ref: **PFMAEB** (Elbows)



Part Ref: **PFMATB** (Tees)



STEM REDUCER - EXPANDERS

Part Ref	Stem OD	Tube OD
PFM154NR	5 mm	4 mm
PFM164NR	6 mm	4 mm
PFM184NR	8 mm	4 mm
PFM186NR	8 mm	6 mm
PFM1104NR	10 mm	4 mm
PFM1106NR	10 mm	6 mm
PFM1108NR	10 mm	8 mm



Part Ref	Stem OD	Tube OD
PFM1128NR	12 mm	8 mm
PFM11210NR	12 mm	10 mm
Expanders		
PFM146NR	4 mm	6 mm
PFM168NR	6 mm	8 mm

'Y' CONNECTOR (DIVIDER)



Part Ref	Tube OD
PFM1004NR	4 mm
PFM1006NR	6 mm
PFM1008NR	8 mm
PFM1010NR	10 mm
PFM1012NR	12 mm

ELBOW STEM CONNECTOR

Part Ref	Stem	Tube OD
PFM544NR	4 mm	4 mm
PFM566NR	6 mm	6 mm
PFM588NR	8 mm	8 mm



PUSH IN PLASTIC - COMPOSITE NORGREN FITTINGS

MALE STUD

Part Ref	Thread	Tube OD
PMS04M5	M5	4 mm
PMS04M6	M6	4 mm
PMS0402NR	1/8"	4 mm
PMS0404NR	1/4"	4 mm
PMS06M5	M5	6 mm
PMS06M6	M6	6 mm
PMS0602NR	1/8"	6 mm
PMS0604NR	1/4"	6 mm
PMS0606NR	3/8"	6 mm



Part Ref	Thread	Tube OD
PMS0802NR	1/8"	8 mm
PMS0804NR	1/4"	8 mm
PMS0806NR	3/8"	8 mm
PMS0808NR	1/2"	8 mm
PMS1002NR	1/8"	10 mm
PMS1004NR	1/4"	10 mm
PMS1006NR	3/8"	10 mm
PMS1008NR	1/2"	10 mm
PMS1204NR	1/4"	12 mm
PMS1206NR	3/8"	12 mm
PMS1208NR	1/2"	12 mm

SWIVEL ELBOW



360°

Part Ref	Thread	Tube OD
PMSE04M5	M5	4 mm
PMSE04M6	M5	4 mm
PMSE0402NR	1/8"	4 mm
PMSE 0404NR	1/4"	4 mm
PMSE06M5	M5	6 mm
PMSE06M6	M5	6 mm
PMSE0602NR	1/8"	6 mm
PMSE0604NR	1/4"	6 mm
PMSE0606NR	3/8"	6 mm
PMSE0802NR	1/8"	8 mm
PMSE0804NR	1/4"	8 mm
PMSE0806NR	3/8"	8 mm
PMSE1004NR	1/4"	10 mm
PMSE1006NR	3/8"	10 mm
PMSE1008NR	1/2"	10 mm
PMSE1204NR	1/4"	12 mm
PMSE1206NR	3/8"	12 mm
PMSE1208NR	1/2"	12 mm

FEMALE STUD



Part Ref	Thread	Tube OD
PMFS0402NR	1/8"	4 mm
PMFS0404NR	1/4"	4 mm
PMFS0504NR	1/4"	5 mm
PMFS0602NR	1/8"	6 mm
PMFS0604NR	1/4"	6 mm
PMFS0606NR	3/8"	6 mm
PMFS0802NR	1/8"	8 mm
PMFS0804NR	1/4"	8 mm
PMFS0806NR	3/8"	8 mm
PMFS1004NR	1/4"	10 mm
PMFS1006NR	3/8"	10 mm
PMFS1008NR	1/2"	10 mm
PMFS1206NR	3/8"	12 mm
PMFS1208NR	1/2"	12 mm

PUSH IN PLASTIC - COMPOSITE NORGREN FITTINGS

Part Ref	Thread	Tube OD
PMSY0402NR	1/8"	4 mm
PMSY0404NR	1/4"	4 mm
PMSY0602NR	1/8"	6 mm
PMSY0604NR	1/4"	6 mm
PMSY0606NR	3/8"	6 mm

SWIVEL 'Y'



Part Ref	Thread	Tube OD
PMSY0802NR	1/8"	8 mm
PMSY0804NR	1/4"	8 mm
PMSY1004NR	1/4"	10 mm
PMSY1006NR	3/8"	10 mm
PMSY1008NR	1/2"	10 mm

Part Ref	Thread	Tube OD
PMT04M5	M5	4 mm
PMT0402NR	1/8"	4 mm
PMT0404NR	1/4"	4 mm
PMT04M6	M6	6 mm
PMT0602NR	1/8"	6 mm
PMT0604NR	1/4"	6 mm
PMT0802NR	1/8"	8 mm
PMT0804NR	1/4"	8 mm

SWIVEL TEE



Part Ref	Thread	Tube OD
PMT0806NR	3/8"	8 mm
PMT1002NR	1/8"	10 mm
PMT1004NR	1/4"	10 mm
PMT1006NR	3/8"	10 mm
PMT1008NR	1/2"	10 mm
PMT1204NR	1/4"	12 mm
PMT1206NR	3/8"	12 mm
PMT1208NR	1/2"	12 mm

Part Ref	Thread	Tube OD
PMSRT04M5	M5	4 mm
PMSRT0402NR	1/8"	4 mm
PMSRT0404NR	1/4"	4 mm
PMSRT04M6	M6	6 mm
PMSRT0602NR	1/8"	6 mm
PMSRT0604NR	1/4"	6 mm
PMSRT0802NR	1/8"	8 mm
PMSRT0804NR	1/4"	8 mm

SWIVEL SIDE TEE



Part Ref	Thread	Tube OD
PMSRT0806NR	3/8"	8 mm
PMSRT1002NR	1/8"	10 mm
PMSRT1004NR	1/4"	10 mm
PMSRT1006NR	3/8"	10 mm
PMSRT1008NR	1/2"	10 mm
PMSRT1204NR	1/4"	12 mm
PMSRT1206NR	3/8"	12 mm
PMSRT1208NR	1/2"	12 mm

BLANKING PLUG



Part Ref	Tube OD
PFM44NR	4 mm
PFM46NR	6 mm
PFM48NR	8 mm
PFM410NR	10 mm
PFM412NR	12 mm

BLANKING CAP



Part Ref	Tube OD
PFMC4NR	4 mm
PFMC6NR	6 mm
PFMC8NR	8 mm
PFMC10NR	10 mm
PFMC12NR	12 mm

STEM CONNECTOR



Part Ref	Tube OD
PFMS4NR	4 mm
PFMS6NR	6 mm
PFMS8NR	8 mm
PFMS10NR	10 mm
PFMS12NR	12 mm