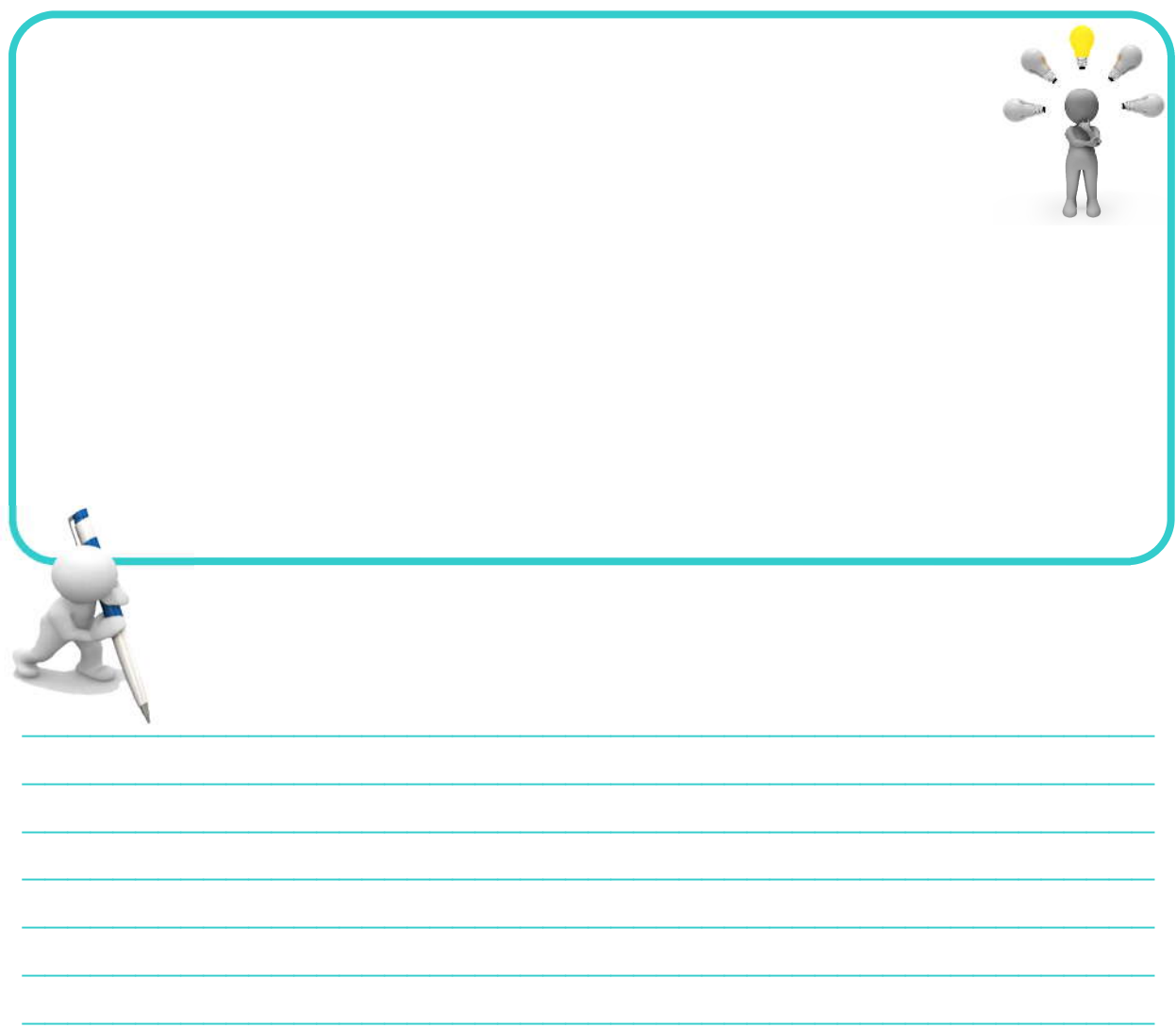


SECTION



COUPLINGS - VALVES - TEST EQUIPMENT



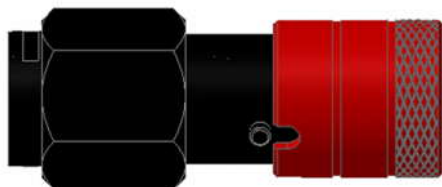
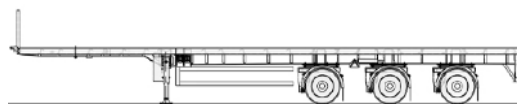
A large empty rectangular box with a light blue border, intended for text or images. The box is mostly empty, with a small 3D character holding a pen at the bottom left and a 3D character with a lightbulb above its head at the top right.



BRITISH STANDARD BSAU138b:2000 COUPLINGS

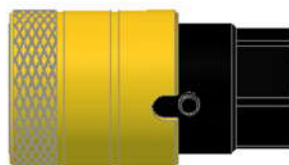


- This standard combines the components of the older standard. Reducing the need for assembly and eliminating potential assembly errors or leakage.
- All couplings have colour coded labels - yellow for the service line and red for the emergency line.
- The outer sleeves of the female couplings are anodised aluminium and use the same colour code.
 - All steel parts are Zinc-Nickel plated to 12 micron and black passivated. This typically gives protection against at least 350 hours of salt spray. This is well in excess of the 96 hours required by BS AU 138b:2000.
 - Metric Thread is indicated by a groove on the hexagon.



Part Ref	Thread
SSVCA16FH	M16 x 1.5 mm
SSVCA22FH	M22 x 1.5 mm
SSVCA7FH	1/2" BSP

Part Ref	Thread
MC16FH	M16 x 1.5 mm
MC22FH	M22 x 1.5 mm
MC7FH	1/2" BSP



Part Ref	Thread
SSV16FH	M16 x 1.5 mm
SSV22FH	M22 x 1.5 mm
SSV7FH	1/2" BSP

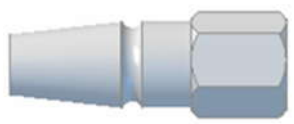
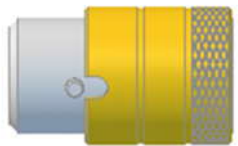
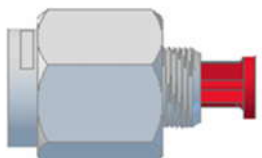
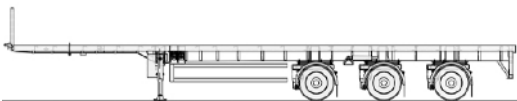
Part Ref	Thread
FCOV16FH	M16 x 1.5 mm
FCOV22FH	M22 x 1.5 mm
FCOV7FH	1/2" BSP

COUPLINGS

TRUCK - TRACTOR



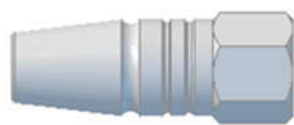
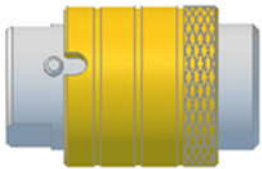
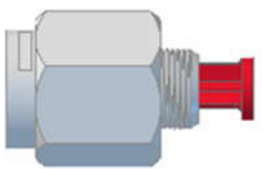
TRAILER



Part Ref	Thread
SSVCA7IR	1/2" BSP
SSVCA22IR	M22 x 1.5 mm

Part Ref	Thread
FC7IR	1/2" BSP
FC22IR	M22 x 1.5 mm

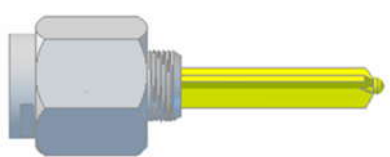
Part Ref	Thread
MC7IR	1/2" BSP
MC22IR	M22 x 1.5 mm



Part Ref	Thread
SSVCA7IR	1/2" BSP
SSVCA22IR	M22 x 1.5 mm

Part Ref	Thread
FCA7IR	1/2" BSP
FCA22IR	M22 x 1.5 mm

Part Ref	Thread
MCA7IR	1/2" BSP
MCA22IR	M22 x 1.5 mm



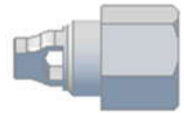
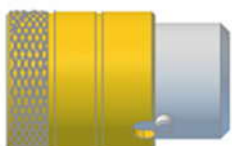
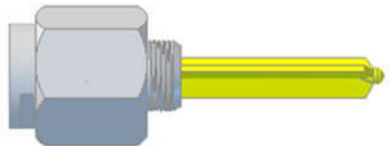
Part Ref	Thread
SSV7IR	1/2" BSP
SSV22IR	M22 x 1.5 mm

Part Ref	Thread
MC7IR	1/2" BSP
MC22IR	M22 x 1.5 mm

Part Ref	Thread
FCOV7IR	1/2" BSP
FCOV22IR	M22 x 1.5 mm



OR



Part Ref	Thread
SSV7IR	1/2" BSP
SSV22IR	M22 x 1.5 mm

Part Ref	Thread
MC7IR	1/2" BSP
MC22IR	M22 x 1.5 mm

Part Ref	Thread	Part Ref	Thread
FC7IR	1/2" BSP	OV7IR	1/2" BSP
FC22IR	M22 x 1.5 mm	OV22IR	M22 x 1.5 mm

COUPLING LOCKS



MALE AIR LINE LOCK - Part Ref: **ABCCL2**

- The C-lock locks over the male coupling, preventing the trailer from being coupled up.
- The lock sleeve is long enough to cover the male coupling preventing it from being unscrewed from the trailer.
- Each lock is supplied with two keys, which are tucked inside a plastic cap for transit.
- Compact, rugged and simple to operate.
- To fit - Remove the key and push the lock onto the male.
- Locks can be keyed to individual numbers or alternatively batches can be ordered to the same key number (a number of locks operating to the same key).



Lock complete with VOR Sleeve **Part Ref: ABCCL2VOR**

Self Adhesive VOR Sleeve **Part Ref: VORL**

Spare Keys

Part Ref:
ABCCLCSK



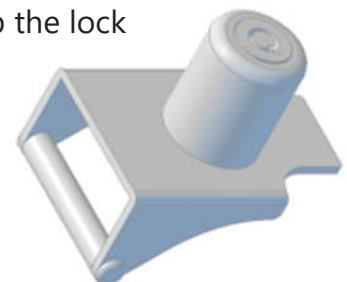
VOR Disc

Part Ref: VORD



PALM LOCK - Part Ref: **ABCPL1**

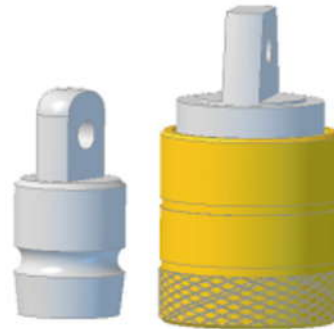
- This is a lock to cover the palm coupling and prevent the accidental coupling of a trailer.
 - The yellow VOR disc also fits this model
- To fit - Remove the key and fit the lock over the coupling then press in the lock.
- To remove - Unlock with the key and slip the lock off the palm coupling.
- Sets of locks operated with the same key may be purchased. This key may also be used on the standard Lock.
- Locks benefit from an occasional application of mineral oil to the inside



DUMMY COUPLINGS & CLIPS

Part Ref: FCMCDUM (Paired)

- Secure storage locations for Couplings.
- Reduce damage to air coils.
- Compact in size.
- Chains and clips to suit available.
- Female has a drainage hole.



Part Ref:
MCDUM
(Male)

Part Ref:
FCDUM
(Female)

PVC Male Protective Cover
Part Ref: MC1



Dog Clip and Chain
Part Ref: DCC



Palm Dummy Coupling
Part Ref: PALMDC



PALM COUPLINGS



Part Ref	Thread
----------	--------

PALM7	1/2"
PAM16	M16 x 1.5 mm
PALM22	M22 x 1.5 mm

Part Ref: PALMSEAL



Part Ref: PALMTH
(Top Hat)



AUTO SELF SEAL



Emergency Line

PALM16R	M16 x 1.5 mm
PALM22R	M22 x 1.5 mm

Service Line

PALM16Y	M16 x 1.5 mm
PALM22Y	M22 x 1.5 mm

Part Ref	Thread
----------	--------

PALM16RA	M16 x 1.5 mm
PALM16YA	M16 x 1.5 mm
PALM22RA	M22 x 1.5 mm
PALM22YA	M22 x 1.5 mm

CHANGE OVER PALM COUPLING KITS

PALM TO FEMALE COUPLING



Part Ref: ALC1

1/2" BSP

Part Ref: ALC3

M22 x 1.5 mm

PALM TO MALE COUPLING

Part Ref: ALC2

1/2" BSP

Part Ref: ALC4

M22 x 1.5 mm



VALVES & FILTERS

Part Ref: PV16HALD

PARK VALVE - M16



Part Ref: SV16HALD

SHUNT VALVE - M16



Part Ref: DCV

DOUBLE CHECK - M16



Part Ref: ILF22

IN LINE FILTER - M22



COUPLING GRIPS



Secure grip and more control

Reduce the strain on operator's hands when coupling up the tractor and trailer

Prevent operator's hand slipping

Reduce the risk of injury

Compact design

The Easy-Grip does not interfere with coils during vehicle articulation

Manufactured from tough, durable rubber compound

Virtually indestructible in normal operating conditions

Reusable – simple push-on fit

Transfer to replacement coil in event of coil or 'C' coupling failure

Colour-coded

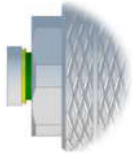




TEST EQUIPMENT

Test Tool and Gauge

- Boxed and complete with gauge.
- The test tool checks the level of lift the female coupling will cause when coupled to male self sealing valve.
- The gauge checks the correct operation of the test tool.



- Double band in indicator section.
- Start of yellow band indicates minimum Requirement of 3mm lift.
- Start of green band indicates preferred level of lift for correct operation - 4mm.
- Used to verify correct manufacture and installation of female service line coupling.
- As supplied to DVSA.



TEST EQUIPMENT

Part Ref: TG2



100 mm Glycerin
Test Gauge
Bottom threaded

0 - 16 Bar
-10 to 70° c



Part Ref: TGRPC

Protective
Rubber
Surround



TEST POINT ADAPTORS



WING NUT

Part Ref	Tube ID
TPA1/W	3/16" - 5 mm



STANDARD

Part Ref	Tube ID
TPA1	3/16" - 5 mm
TPA2	1/4" - 7 mm
TPA3	3/8" - 10 mm



LONG STEM

Part Ref	Tube ID
TPA2L	1/4" - 7 mm
TPA3L	3/8" - 10 mm



'O' Clips in Section
8 / Page 3

All adaptors M16 x 1.5 mm
Female Thread



← GAUGE + 5 METRE HOSE

Part Ref: **TG25M**

GAUGE HOSE 2 METRE →

Part Ref: **GH2M**



TEST EQUIPMENT KITS

Enables you to identify the air pressure from any given Test Point

Enables you to determine the air pressure from Truck to Trailer

Pre MOT Testing

Faulty Valve Indication

Calibration

Load Sensing Valve Testing

Balancing Air Pressure



Part Ref: **ETB001V**

CONTENTS OF KIT:

Two gauges (16 Bar) measuring psi/bar and vacuum

Test coupling tee-piece / Service-line coupling tester

Two x 2 mtr Hoses complete with Test Point Adaptors

Part Ref: **ABC009**

CONTENTS OF KIT:

SINGLE GAUGE (16 Bar)

Two x Coupling Testers

One x 2 mtr hose complete with test point adaptors



CARRY CASES



Part Ref:
TBG2

HOLDS UPTO 2
GAUGES AND
HOSES

Part Ref:
TBG3

HOLDS UPTO 3
GAUGES AND
HOSES



COLOURS MAY VARY