

# SECTION

# 4



## PUSH IN NICKEL PNEUFIT NORGREN FITTINGS



Metric 4 mm - 14 mm OD Tube - Imperial 1/4" - 3/4" OD Tube

Very compact units - Easy tube insertion for rapid assembly of pneumatic circuits - Positive tube anchorage - Tapered threads are pre-coated with non-PTFE based sealant - Straight Adaptors feature internal hexagon for Allen Key - Silicone free O-rings

### Technical Data

Operating Pressure: vacuum - 18 bar  
(Dependant upon operating specification of tubing)

Operating Temperature: -20°C to + 80°C

Materials: Nickel plated brass for body and collet - Silicone free nitrile rubber 'O' ring



**WARNING:**  
The Push-in tube fittings in the pneufit range **MUST NOT** be used in vehicle air braking



#### Range of tube sizes Metric

- Tube sizes  
4 mm o/d  
5 mm o/d  
6 mm o/d  
8 mm o/d  
10 mm o/d  
12 mm o/d  
14 mm o/d
- Tubing types:  
Polyamide (PA)  
Polyurethane (PU)



 NORGREN

## PNEUFIT PUSH IN TUBE FITTINGS

### STRAIGHT JOINERS



#### METRIC

Part Ref	Tube OD
100200400	4 mm
100200500	5 mm
100200600	6 mm
100200800	8 mm
100201000	10 mm
100201200	12 mm
100201400	14 mm

#### IMPERIAL

Part Ref	Tube OD
120200100	1/8"
120200200	5/32"
120200300	3/16"
120200400	1/4"
120200500	5/16"
120200600	3/8"
120200700	1/2"

### EQUAL ELBOWS



#### METRIC

Part Ref	Tube OD
100400400	4 mm
100400500	5 mm
100400600	6 mm
100400800	8 mm
100401000	10 mm
100401200	12 mm
100401400	14 mm

#### IMPERIAL

Part Ref	Tube OD
120400100	1/8"
120400200	5/32"
120400300	3/16"
120400400	1/4"
120400500	5/16"
120400600	3/8"
120400700	1/2"

### EQUAL TEES



#### METRIC

Part Ref	Tube OD
100600400	4 mm
100600500	5 mm
100600600	6 mm
100600800	8 mm
100601000	10 mm
100601200	12 mm
100601400	14 mm

#### IMPERIAL

Part Ref	Tube OD
120600100	1/8"
120600200	5/32"
120600300	3/16"
120600400	1/4"
120600500	5/16"
120600600	3/8"
120600700	1/2"

### STRAIGHT ADAPTORS



BSP Taper  
Thread

Part Ref	Thread	Tube OD
101250418	1/8"	4 mm
101250428	1/4"	4 mm
101250518	1/8"	5 mm
101250528	1/4"	5 mm
101250618	1/8"	6 mm
101250628	1/4"	6 mm
101250818	1/8"	8 mm
101250828	1/4"	8 mm
101250838	3/8"	8 mm
101250848	1/2"	8 mm

Part Ref	Thread	Tube OD
101251018	1/8"	10 mm
101251028	1/4"	10 mm
101251038	3/8"	10 mm
101251048	1/2"	10 mm
101251228	1/4"	12 mm
101251238	3/8"	12 mm
101251248	1/2"	12 mm
101251438	3/8"	14 mm
101251448	1/2"	14 mm



## PNEUFIT PUSH IN TUBE FITTINGS

### STRAIGHT ADAPTOR



#### BSP Parallel Thread

Part Ref	Thread	Tube OD
102250405	M5 x 0.8	4 mm
102250406	M6	4 mm
102250408	M8	4 mm
102250410	M10	4 mm
102250418	1/8"	4 mm
102250428	1/4"	4 mm
102250505	M5 x 0.8	5 mm
102250518	1/8"	5 mm
102250528	1/4"	5 mm
102250605	M5 x 0.8	6 mm
102250606	M6	6 mm
102250806	M8	6 mm
102250610	M10	6 mm
102250618	1/8"	6 mm
102250628	1/4"	6 mm
102250818	1/8"	8 mm
102250828	1/4"	8 mm
102250838	3/8"	8 mm
102250848	1/2"	8 mm
102251018	1/8"	10 mm
102251028	1/4"	10 mm
102251038	3/8"	10 mm
102251048	1/2"	10 mm
102251228	1/4"	12 mm
102251238	3/8"	12 mm
102251248	1/2"	12 mm

Metric threaded studs  
are manufactured by



### STRAIGHT ADAPTOR



#### BSP Taper Thread

Part Ref	Thread BSP	Tube OD
121250118	1/8"	1/8"
121250128	1/4"	1/8"
121250418	1/8"	5/32"
121250428	1/4"	5/32"
121250418	1/8"	1/4"
121250428	1/4"	1/4"
121250438	3/8"	1/4"

### FIXED ELBOW

#### BSP Taper Thread



Part Ref	Thread	Tube OD
101450418	1/8"	4 mm
101450428	1/4"	4 mm
101450518	1/8"	5 mm
101450528	1/4"	5 mm
101450618	1/8"	6 mm
101450628	1/4"	6 mm
101450818	1/8"	8 mm
101450828	1/4"	8 mm
101450838	3/8"	8 mm
101450848	1/2"	8 mm
101451018	1/8"	10 mm
101451028	1/4"	10 mm
101451038	3/8"	10 mm
101451048	1/2"	10 mm
101451228	1/4"	12 mm
101451238	3/8"	12 mm
101451248	1/2"	12 mm



## PNEUFIT PUSH IN TUBE FITTINGS

### SWIVEL ELBOWS



#### BSP Taper Thread

Part Ref	Thread	Tube OD
101470418	1/8"	4 mm
101470428	1/4"	4 mm
101470518	1/8"	5 mm
101470528	1/4"	5 mm
101470618	1/8"	6 mm
101470628	1/4"	6 mm
101470638	3/8"	6 mm
101470818	1/8"	8 mm
101470828	1/4"	8 mm
101470838	3/8"	8 mm
101470848	1/2"	8 mm
101471018	1/8"	10 mm
101471028	1/4"	10 mm
101471038	3/8"	10 mm
101471048	1/2"	10 mm
101471228	1/4"	12 mm
101471238	3/8"	12 mm
101471248	1/2"	12 mm
101471438	3/8"	14 mm
101471448	1/2"	14 mm

#### BSP Parallel Thread

Part Ref	Thread	Tube OD
102470418	1/8"	4 mm
102470428	1/4"	4 mm
102470518	1/8"	5 mm
102470528	1/4"	5 mm
102470618	1/8"	6 mm
102470628	1/4"	6 mm
102470818	1/8"	8 mm
102470828	1/4"	8 mm
102470838	3/8"	8 mm
102470848	1/2"	8 mm
102471018	1/8"	10 mm
102471028	1/4"	10 mm
102471038	3/8"	10 mm
102471048	1/2"	10 mm
102471228	1/4"	12 mm
102471238	3/8"	12 mm
102471248	1/2"	12 mm
102471438	3/8"	14 mm
102471448	1/2"	14 mm

#### BSP Taper Thread

Part Ref	Thread	Tube OD
121470118	1/8"	1/8"
121470318	1/8"	3/16"
121470418	1/8"	1/4"
121470818	1/8"	5/16"
121470328	1/4"	3/16"
121470428	1/4"	1/4"
121470828	1/4"	5/16"
121470628	1/4"	3/8"
121470728	1/4"	1/2"
121470638	3/8"	3/8"
121470648	1/2"	3/8"
121470738	3/8"	1/2"
121470748	1/2"	1/2"

### SWIVEL ELBOWS



Request  
More  
Information

Metric threaded Elbows  
are manufactured by



Part Ref	Thread	Tube OD
102470405	M5	4 mm
102470406	M6	4 mm
102470408	M8	4 mm
102470410	M10	4 mm

Part Ref	Thread	Tube OD
102470505	M5	5 mm
102470605	M6	5 mm
102470606	M6	6 mm
102470608	M8	6 mm
102470610	M10	6 mm



### SWIVEL TEES



#### BSP Taper Thread

Part Ref	Thread	Tube OD
101670418	1/8"	4 mm
101670428	1/4"	4 mm
101670518	1/8"	5 mm
101670528	1/4"	5 mm
101670618	1/8"	6 mm
101670628	1/4"	6 mm
101670818	1/8"	8 mm
101670828	1/4"	8 mm
101670838	3/8"	8 mm
101670848	1/2"	8 mm
101671018	1/8"	10 mm
101671028	1/4"	10 mm
101671038	3/8"	10 mm
101671048	1/2"	10 mm
101671228	1/4"	12 mm
101671238	3/8"	12 mm
101671248	1/2"	12 mm

### TUBE STEM



#### REDUCER

Part Ref	Stem	Tube OD
100230504	5 mm	4 mm
100230604	6 mm	4 mm
100230605	6 mm	5 mm
100230804	8 mm	4 mm
100230805	8 mm	5 mm
100230806	8 mm	6 mm
100231004	10 mm	4 mm
100231006	10 mm	6 mm
100231008	10 mm	8 mm
100231204	12 mm	4 mm
100231205	12 mm	5 mm
100231206	12 mm	6 mm
100231208	12 mm	8 mm
100231210	12 mm	10 mm
100231406	14 mm	6 mm
100231408	14 mm	8 mm
100231410	14 mm	10 mm
100231412	14 mm	12 mm

### TUBE STEM



#### EXPANDER

Part Ref	Stem	Tube OD
100230406	4 mm	6 mm
100230608	6 mm	8 mm

### BULKHEAD CONNECTOR



Part Ref	Tube OD
100290400	4 mm
100290500	5 mm
100290600	6 mm
100290800	8 mm
100291000	10 mm
100291200	12 mm
100291400	14 mm

### FEMALE STUD

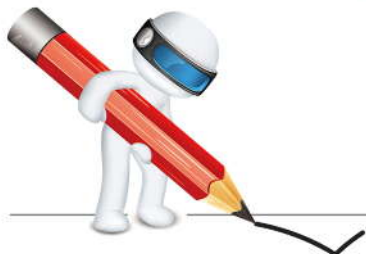


Part Ref	Thread	Tube OD
102260405	M5 x 0.8	4 mm
102260418	1/8"	4 mm
102260428	1/4"	4 mm
102260518	1/8"	5 mm
102260528	1/4"	5 mm
102260618	1/8"	6 mm
102260628	1/4"	6 mm

Part Ref	Thread	Tube OD
102260818	1/8"	8 mm
102260828	1/4"	8 mm
102261028	1/4"	10 mm
102261038	3/8"	10 mm
102261238	3/8"	12 mm
102261248	1/2"	12 mm



**Other various Pneumatic fittings  
available upon request**



**NORGEN FleetFit  
available in Section 6**

---

---

---

---

---

---

---

---

---

---

**PNUEFIT ASSORTED WORKSHOP BOX**



**NORG100TAB**

**CONSISTS OF:**

**4 / 6 / 8 / 10 / 12 mm Connectors x 4**

**6 / 8 / 10 / 12 mm Tees x 2**

**1/8" x 6 mm Stud x 4**

**1/8" x 8 mm Stud x 4**

**1/8" x 10 mm Stud x 4**

**1/4" x 12 mm Stud x 4**

**1/8" x 6 mm Swivel Elbow x 4**

**1/8" x 8 mm Swivel Elbow x 4**

**1/8" x 10 mm Swivel Elbow x 4**

**1/4" x 12 mm Swivel Elbow x 4**

**1/4" Male x 1/8" Female Adaptor x 4**