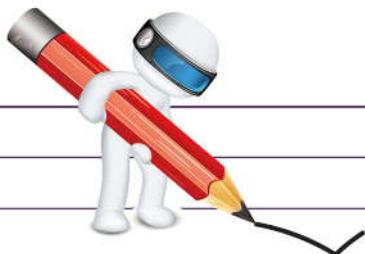


SECTION

8

GREASE NIPPLES & ACCESSORIES



GREASE NIPPLES & ACCESSORIES

STRAIGHTS



Part Ref	Thread
GN2	1/8" BSP
GN4	1/4" BSP
GN4UNF	1/4" UNF
GN5BSF	5/16" BSP
GN6	6 x 1 mm
GN8	8 x 1 mm
GN8125	8 x 1.25 mm
GN101	10 x 1 mm
GN10125	10 x 1.25 mm
GN1015	10 x 1.5 mm

HOOK ON



Part Ref	Thread
GNHO1	1/8" BSP

Assorted box of Grease Nipples - Part Ref: GNAB



45 DEGREE



Part Ref	Thread
GN452	1/8" BSP
GN454	1/4" BSP
GN545BSF	5/16" BSP
GN4561	6 x 1 mm
GN4581	8 x 1 mm
GN45101	10 x 1 mm
GN4510125	10 x 1.25 mm
GN451015	10 x 1.5 mm

SLIDE ON



Part Ref
SON

**11" Grease Gun Hose
Part: GGH11R**
**20" Grease Gun Hose
Part: GGH20R**
**12" Grease Gun Flexi
Hose - Part: GFH12**



90 DEGREE



Part Ref	Thread
GN902	1/8" BSP
GN904	1/4" UNF
GN9061	6 x 1 mm
GN9081	8 x 1 mm
GN90101	10 x 1 mm
GN901015	10 x 1.5 mm

EXTENSION



Part Ref	Thread
GNEXT	1/8" BSP

Grease Gun - Part Ref: GGU



DIAPHRAGMS

SERVICE



Part Ref	Type
DS9	9
DS12	12
DS16	16
DS20	20
DS24	24
DS30	30
DS36	36

LONG STROKE

Part Ref	Type
DLS9	9
DLS12	12
DLS16	16
DLS20	20
DLS24	24
DLS30	30
DLS36	36

1/4 TURN



SHUT OFF TAPS

Part Ref	Thread
SOT4	1/4" BSP
SOT6	3/8" BSP
SOT8	1/2" BSP
SOT12	3/4" BSP
SOT16	1" BSP
SOT20	1 1/4" BSP
SOT22	M22 x 1.5
SOT24	1 1/2"
SOT16R	M16 x 1.5
SOT16Y	M16 x 1.5
SOT8Y	1/2" BSP

SILENCER

Sintered Bronze



Part Ref	Thread
MS1	1/8"
MS2	1/4"
MS3	3/8"
MS4	1/2"

SILENCER

Flat



Part Ref	Thread
MS1F	1/8"
MS2F	1/4"
MS3F	3/8"
MS4F	1/2"

BREATHER

IMPERAL & METRIC



Part Ref	Thread
EX2	1/8"
EX4	1/4"
BR12	M12 x 1.5
BR16	M16 x 1.5

PRESSURE SWITCHES & BOOTS

Hexagon



Part Ref	Thread
PS1	1/8"

MAX 350 BAR

Knurled



Part Ref	Thread
PS2	1/8"



Part Ref	To Suit
PS1B	PS1
PS2B	PS2

CLIPS & CLAMPS

'O' CLIPS



Part Ref	Size	Size
	INCHES	MM
OC4	1/4"	5 - 7
OC5	5/16"	7 - 9
OC6	3/8"	8 - 11
OC7	7/16"	9 - 12
OC8	1/2"	11 - 13
OC9	9/16"	13 - 15
OC10	5/8"	15 - 18
OC12	3/4"	17 - 20
OC14	7/8"	20 - 23
OC16	1"	23 - 26

O CLIPS PLIERS
Part Ref: OCP2



ASSORTED BOX
Part Ref: OCAB



TUBE CLAMPS



ASSORTED BOX
Part Ref: TCAB



Part Ref	Tube OD
TC6	6 mm
TC8	8 mm
TC10	10 mm
TC12	12 mm
TC16	16 mm
TC18	18 mm
TC25	25 mm

WORM DRIVE - JUBILEE CLIPS



Part Ref	Standard Ref	Adjustment
WD67	OOO	9.5 - 12 mm
WD810	MOO	11 - 16 mm
WD812	OO	13 - 20 mm
WD1014	O	16 - 22 mm
WD1216	OX	18 - 25 mm
WD1418	1A	22 - 30 mm
WD1622	1	25 - 35 mm
WD1826	1X	30 - 40 mm

Part Ref	Standard Ref	Adjustment
WD2032	2A	35 - 50 mm
WD2434	2	40 - 55 mm
WD2836	2X	45 - 60 mm
WD3444	3	55 - 70 mm
WD3850	3X	60 - 80 mm
WD4456	4	70 - 90 mm
WD5064	4X	85 - 100 mm
WD5676	5	90 - 120 mm



BOLT CLIP

TO SUIT 13mm ID Hose

ASSORTED BOX

Part Ref: **WDAB**



QUICK RELEASE AIR IN LINE CAB DUST BLOWER

Part Ref: **ICB**



IN LINE 6MM TEE OFF CAB BLOWER FOR DEBRIS
REMOVAL, GREAT FOR SMALL SPACES .

4 MTR COIL

MAX PRESSURE - 10kg/CM2

